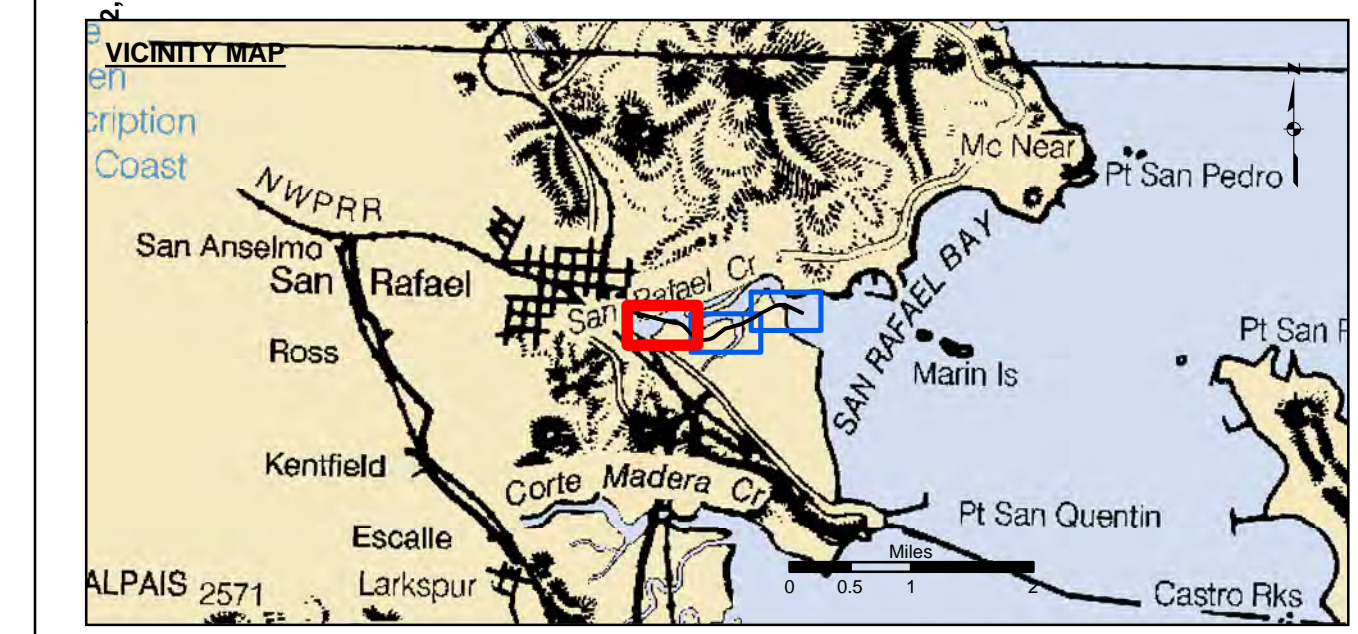


NAD 1983 CENTERLINE ANGLE POINTS		
ANGLE PT	X	Y
C01	5987089.37	2181692.15
C02	5986334.07	2182035.55
C03	5986088.27	2182054.45
C04	5985885.57	2181993.85
C05	5985380.77	2181729.75
C06	5984935.97	2181458.25
C07	5984421.07	2181213.45
C08	5983862.47	2181058.95
C09	5983735.07	2181010.85
C10	5983242.97	2180634.65
C11	5983023.37	2180542.35
C12	5982759.17	2180513.25
C13	5982475.57	2180605.75
C14	5982265.37	2180760.35
C15	5981973.07	2181089.55
C16	5981896.67	2181147.35
C17	5981723.17	2181235.75
C18	5981476.77	2181276.25
C19	5980172.77	2181612.05
C20	5919679.07	2181750.05

NAD 1983 CHANNEL ANGLE POINTS		
ANGLE PT	X	Y
1	5987101.87	2181719.45
2	5986637.57	2181930.55
3	5986637.57	2182065.05
4	5986084.97	2182084.85
5	5985874.27	2182021.75
6	5985365.97	2181755.85
7	5984921.77	2181484.65
8	5984410.57	2181241.65
9	5983853.17	2181087.55
10	5983720.27	2181037.35
11	5983227.77	2180660.75
12	5983015.77	2180571.65
13	5982762.27	2180543.75
14	5982489.47	2180632.75
15	5982285.67	2180782.65
16	5981993.57	2181111.65
17	5981912.57	2181172.85
18	5981732.57	2181264.65
19	5981482.97	2181305.55
20	5980180.57	2181641.55
21	5979689.27	2181778.35
22	5979668.87	2181721.75

NAD 1983 CHANNEL ANGLE POINTS		
ANGLE PT	X	Y
23	5979972.37	2181637.25
24	5979945.57	2181540.95
25	5980138.27	2181487.25
26	5980165.07	2181583.65
27	5981470.57	2181246.85
28	5981713.67	2181206.95
29	5981880.67	2181121.75
30	5981952.57	2181067.35
31	5982244.97	2180738.05
32	5982461.67	2180578.65
33	5982755.97	2180482.65
34	5983030.97	2180512.95
35	5983258.17	2180608.45
36	5983749.77	2180984.35
37	5984431.57	2181185.15
38	5984431.57	2181185.15
39	5984950.27	2181431.85
40	5985395.57	2181703.65
41	5985896.97	2181965.95
42	5986091.47	2182024.15
43	5986326.57	2182006.05
44	5987076.97	2181664.85



Federal Navigation Channel	Beacon, General	Contours
Shoaling Area	Obstruction Point	-5
Placement Area	Navigation Buoy	-4
Anchorage Area	Navigation Buoy	-3
Wreck Area	Shoalest Sounding*	-2
Submerged Wreck		-1
Angle Point		

NOTES:
DRAWING NOT TO BE USED FOR NAVIGATION, ONLY CHANNEL CONDITION AT DATE OF SURVEY.
THE LOCATION OF ALL NAVIGATION AIDS ARE BASED ON INFORMATION PROVIDED BY THE U.S. COAST GUARD. BUOY LOCATIONS REPRESENT THE POSITION OF THE SINKER ONLY.

SURVEYED BY THE CORPS OF ENGINEERS.

SOUNDINGS FOR ARE TAKEN BY FATHOMETER AND ARE SHOWN TO THE NEAREST FOOT AND TENTH OF A FOOT.

SOUNDINGS ARE BASED ON THE DATUM OF MEAN LOWER LOW WATER AT THE LOCALITY.

PLANE GRID AND COORDINATES ARE BASED ON LAMBERT PROJECTION, ZONE III NAD 83, CALIFORNIA, AS DESCRIBED IN SPECIAL PUBLICATION NO. 236, PUBLISHED BY NATIONAL OCEAN SURVEY.

THE PROJECT DEPTH IS 5 FEET.

HORIZONTAL CONTROL: DESIGNATION, SOURCE, XYZ COAST GUARD D-BEACON

VERTICAL CONTROL: BENCHMARK, MLLW ELEV., AGENCY B.M. TIDAL 17 (1951), USCGS DISK, 9.73 MLLW HARBOR ST. PUMPHOUSE, EAST FRANCISCO BLVD. B.M. L 551 (1956), USCGS DISK, 15.61 MLLW SAN RAFAEL SANITARY DIST. PUMPHOUSE, PT. SAN PEDRO RD.

TIDE GAGE LOCATION: SAN RAFAEL YACHT HARBOR & MARIN YACHT HARBOR
STA. 119+00 TO 150+00 ... Marin Yacht Harbor
STA. 150+00 TO 200+87 ... San Rafael Yacht Harbor
FLOOD => SLACK => EBB TIDE SURVEY 5.2 FL => 6.4 FL.

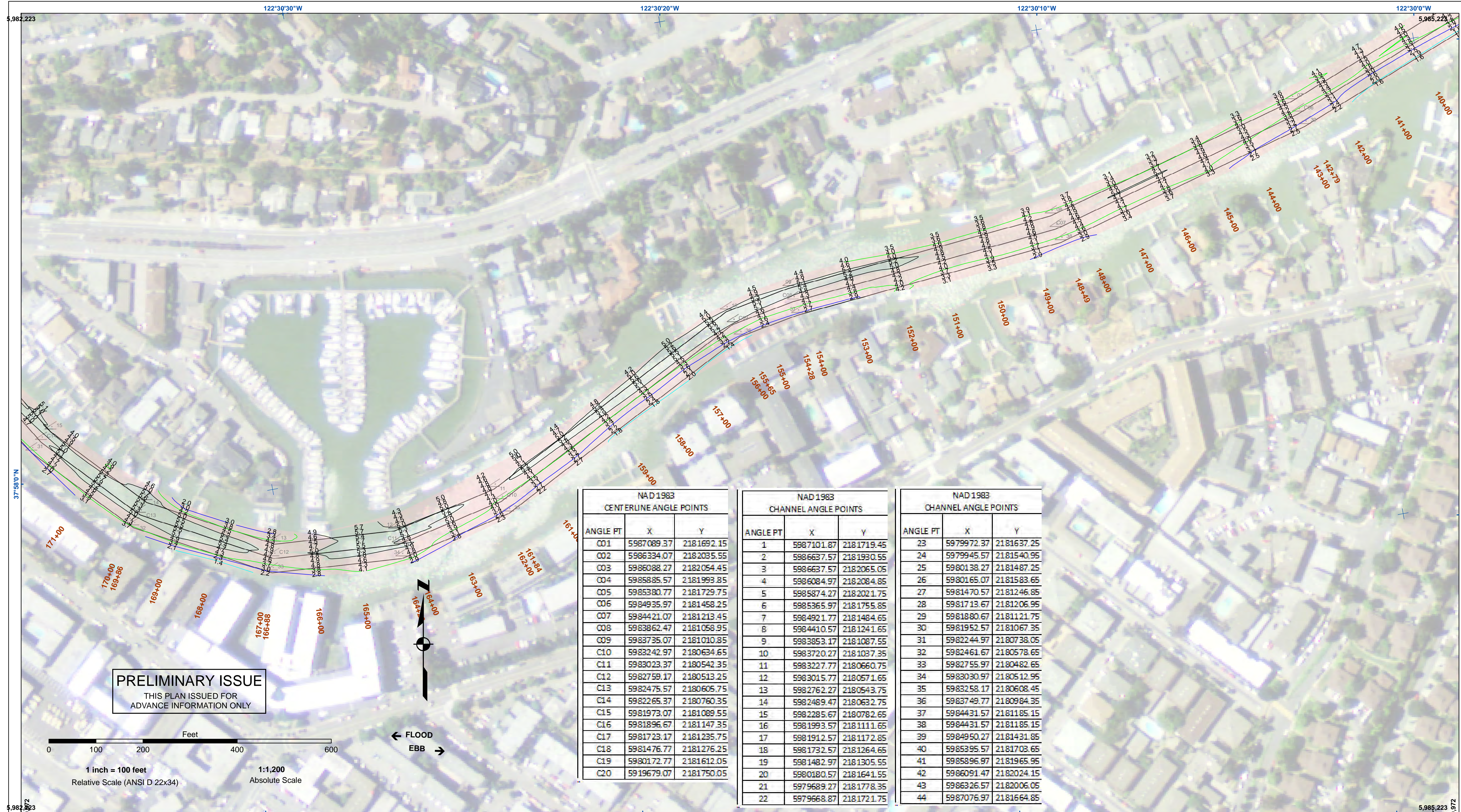
US Army Corps of Engineers
San Francisco District
450 Market Street
San Francisco, CA 94102

DISCLAIMER
Access Constraints: The United States Government furnishes this information as a service to other than Government provided data. The recipient may not transfer these data to others without also transferring this Disclaimer.
Distribution Liability: The data represents the results of data collected by the US Army Corps of Engineers. Engineers activity and indicates the general existing conditions. As such, it is only valid for its intended use, content, time and accuracy specifications. The user is responsible for the results of any of the application of the data for other than its intended purpose.

Chart Date:	Oct 03, 2019
Designed by:	
Drawn by:	PDT
Surveyed By:	
Plotted By:	
Checked By:	PDT
Prepared Under the Direction of:	LT COLONEL C.E. DISTRICT ENGINEER
Submitted:	PDT
Recommended:	Hydro Survey Team Leader
Approved:	Chief, Hydro Survey Section
	Chief, Construction Branch

CALIFORNIA
MARIN COUNTY
SAN RAFAEL CREEK
CONDITION SURVEY
24 SEPTEMBER 2019

Sheet Reference Number
1 of 3

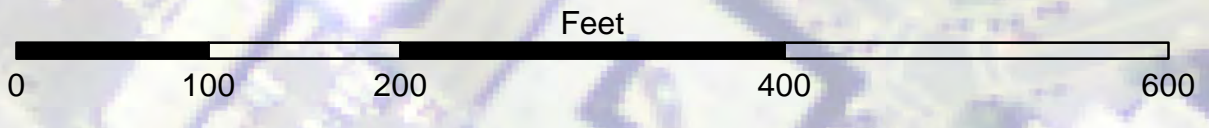


NAD 1983 CENTERLINE ANGLE POINTS			
ANGLE PT	X	Y	
C01	5987089.37	2181692.15	
C02	5986334.07	2182035.55	
C03	5986088.27	2182054.45	
C04	5985885.57	2181993.85	
C05	5985380.77	2181729.75	
C06	5984935.97	2181458.25	
C07	5984421.07	2181213.45	
C08	5983862.47	2181058.95	
C09	5983735.07	2181010.85	
C10	5983242.97	2180634.65	
C11	5983023.37	2180542.35	
C12	5982759.17	2180513.25	
C13	5982475.57	2180605.75	
C14	5982265.37	2180760.35	
C15	5981973.07	2181089.55	
C16	5981896.67	2181147.35	
C17	5981723.17	2181235.75	
C18	5981476.77	2181276.25	
C19	5980172.77	2181612.05	
C20	5919679.07	2181750.05	

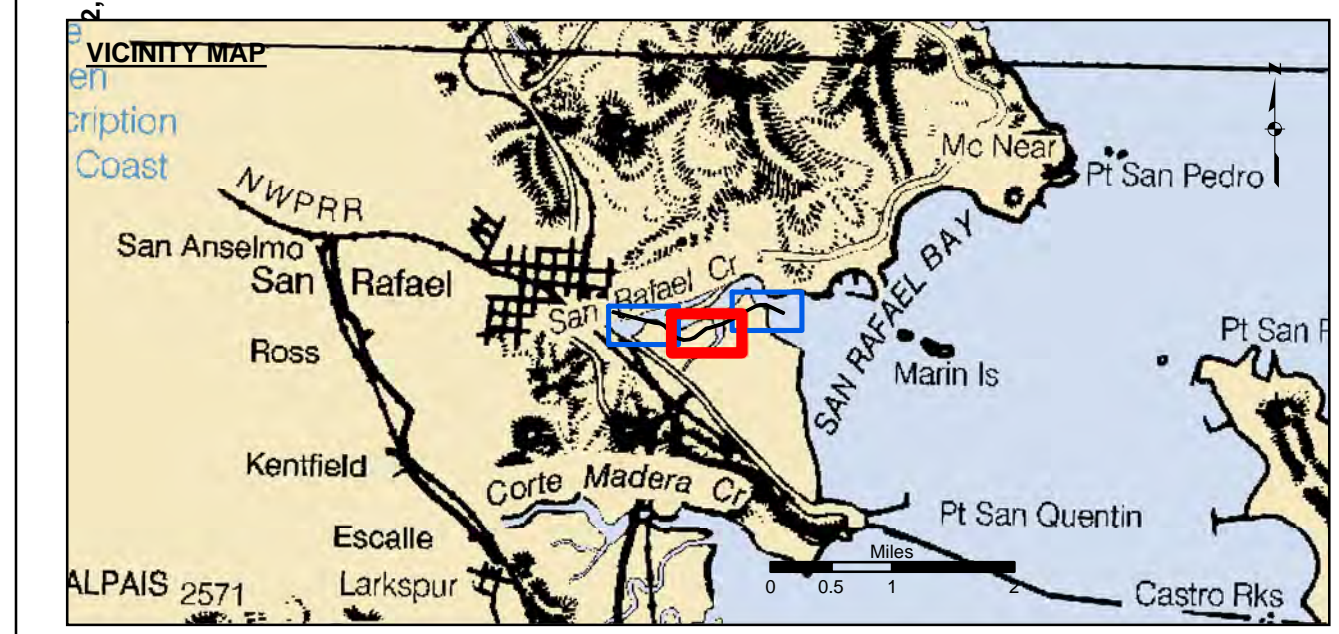
NAD 1983 CHANNEL ANGLE POINTS			
ANGLE PT	X	Y	
1	5987101.87	2181719.45	
2	5986637.57	2181930.55	
3	5986637.57	2182065.05	
4	5986084.97	2182084.85	
5	5985874.27	2182021.75	
6	5985365.97	2181755.85	
7	5984921.77	2181484.65	
8	5984410.57	2181241.65	
9	5983853.17	2181087.55	
10	5983720.27	2181037.35	
11	5983227.77	2180660.75	
12	5983015.77	2180571.65	
13	5982762.27	2180543.75	
14	5982489.47	2180632.75	
15	5982285.67	2180782.65	
16	5981993.57	2181111.65	
17	5981912.57	2181172.85	
18	5981732.57	2181264.65	
19	5981482.97	2181305.55	
20	5980180.57	2181641.55	
21	5979689.27	2181778.35	
22	5979668.87	2181721.75	

NAD 1983 CHANNEL ANGLE POINTS			
ANGLE PT	X	Y	
23	5979972.37	2181637.25	
24	5979945.57	2181540.95	
25	5980138.27	2181487.25	
26	5980165.07	2181583.65	
27	5981470.57	2181246.85	
28	5981713.67	2181206.95	
29	5981880.67	2181121.75	
30	5981952.57	2181067.35	
31	5982244.97	2180738.05	
32	5982461.67	2180578.65	
33	5982755.97	2180482.65	
34	5983030.97	2180512.95	
35	5983258.17	2180608.45	
36	5983749.77	2180984.35	
37	5984431.57	2181185.15	
38	5984431.57	2181185.15	
39	5984950.27	2181431.85	
40	5985395.57	2181703.65	
41	5985896.97	2181965.95	
42	5986091.47	2182024.15	
43	5986326.57	2182006.05	
44	5987076.97	2181664.85	

PRELIMINARY ISSUE
THIS PLAN ISSUED FOR
ADVANCE INFORMATION ONLY



← FLOOD
EBB →



Federal Navigation Channel	Beacon, General	Contours
Shoaling Area	Obstruction Point	-5
Placement Area	Navigation Buoy	-4
Anchorage Area	Navigation Buoy	-3
Wreck Area	Shoalest Sounding*	-2
Submerged Wreck		-1
Angle Point		

NOTES:
DRAWING NOT TO BE USED FOR NAVIGATION, ONLY CHANNEL CONDITION AT DATE OF SURVEY.
THE LOCATION OF ALL NAVIGATION AIDS ARE BASED ON INFORMATION PROVIDED BY THE U.S. COAST GUARD. BUOY LOCATIONS REPRESENT THE POSITION OF THE SINKER ONLY.
SURVEYED BY THE CORPS OF ENGINEERS.
SOUNDINGS FOR ARE TAKEN BY FATHOMETER AND ARE SHOWN TO THE NEAREST FOOT AND TENTH OF A FOOT.
SOUNDINGS ARE BASED ON THE DATUM OF MEAN LOWER LOW WATER AT THE LOCALITY.

PLANE GRID AND COORDINATES ARE BASED ON LAMBERT PROJECTION, ZONE III NAD 83, CALIFORNIA, AS DESCRIBED IN SPECIAL PUBLICATION NO. 236, PUBLISHED BY NATIONAL OCEAN SURVEY.
THE PROJECT DEPTH IS 5 FEET.
HORIZONTAL CONTROL: DESIGNATION, SOURCE, XYZ COAST GUARD D-BEACON
VERTICAL CONTROL: BENCHMARK, MLLW ELEV., AGENCY B.M. TIDAL 17 (1951), USCGS DISK, 9.73 MLLW HARBOR ST. PUMPHOUSE, EAST FRANCISCO BLVD. B.M. L 551 (1956), USCGS DISK, 15.61 MLLW SAN RAFAEL SANITARY DIST. PUMPHOUSE, PT. SAN PEDRO RD.
TIDE GAGE LOCATION: SAN RAFAEL YACHT HARBOR & MARIN YACHT HARBOR
STA. 119+00 TO 150+00 ... Marin Yacht Harbor
STA. 150+00 TO 200+87 ... San Rafael Yacht Harbor
FLOOD => SLACK => EBB TIDE SURVEY 5.2 FL => 6.4 FL.

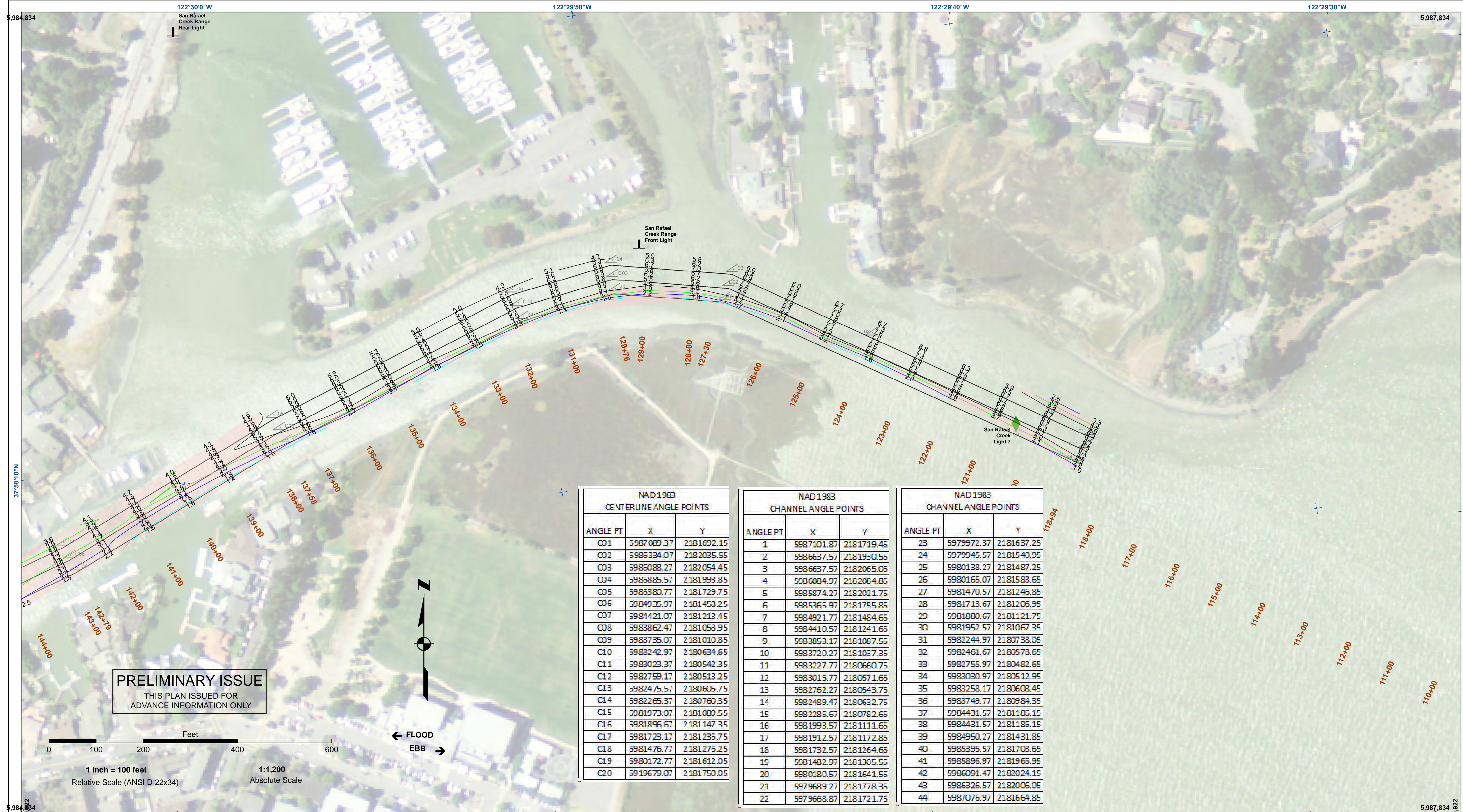
US Army Corps of Engineers
San Francisco District
450 Market Street
San Francisco, CA 94102

DISCLAIMER
Access Constraints: The United States Government furnishes this information as a service to the public and does not warrant, express or implied, the accuracy, completeness, or reliability of the information. The user is responsible for the results of any application of the data for other than its intended purpose. These data are not to be used for navigation, and the user is advised to consult the appropriate nautical charts and publications for the latest information. The user is responsible for the results of any application of the data for other than its intended purpose. These data are not to be used for navigation, and the user is advised to consult the appropriate nautical charts and publications for the latest information. The user is responsible for the results of any application of the data for other than its intended purpose. These data are not to be used for navigation, and the user is advised to consult the appropriate nautical charts and publications for the latest information.

Chart Date:	Oct 03, 2019
Designed by:	
Drawn by:	PDT
Checked by:	PDT
Approved:	
Submitted:	
Plotted by:	
Surveyed By:	
Prepared Under the Direction of:	
LT COLONEL C.E. DISTRICT ENGINEER	
JOHN D. CUNNINGHAM	

CALIFORNIA
MARIN COUNTY
SAN RAFAEL CREEK
CONDITION SURVEY
24 SEPTEMBER 2019

Sheet
Reference
Number
2 of 3



PRELIMINARY ISSUE
THIS PLAN ISSUED FOR
ADVANCE INFORMATION ONLY

NAD 1983 CENTERLINE ANGLE POINTS			
ANGLE PT	X	Y	
C01	5987089.37	2181692.15	
C02	5986334.07	2182035.55	
C03	5986088.27	2182054.45	
C04	5985885.57	2181993.85	
C05	5985380.77	2181729.75	
C06	5984935.97	2181458.25	
C07	5984421.07	2181213.45	
C08	5983862.47	2181058.95	
C09	5983735.07	2181010.85	
C10	5983242.97	2180634.65	
C11	5983023.37	2180542.35	
C12	5982759.17	2180513.25	
C13	5982475.57	2180605.75	
C14	5982265.37	2180760.35	
C15	5981973.07	2181089.55	
C16	5981896.67	2181147.35	
C17	5981723.17	2181235.75	
C18	5981476.77	2181276.25	
C19	5980172.77	2181612.05	
C20	5919679.07	2181750.05	

NAD 1983 CHANNEL ANGLE POINTS			
ANGLE PT	X	Y	
1	5987101.87	2181719.45	
2	5986637.57	2181930.55	
3	5986637.57	2182065.05	
4	5986084.97	2182084.85	
5	5985874.27	2182021.75	
6	5985365.97	2181755.85	
7	5984921.77	2181484.65	
8	5984410.57	2181241.65	
9	5983853.17	2181087.55	
10	5983720.27	2181037.35	
11	5983227.77	2180660.75	
12	5983015.77	2180571.65	
13	5982762.27	2180543.75	
14	5982489.47	2180632.75	
15	5982285.67	2180782.65	
16	5981993.57	2181111.65	
17	5981912.57	2181172.85	
18	5981732.57	2181264.65	
19	5981482.97	2181305.55	
20	5980180.57	2181641.55	
21	5979689.27	2181778.35	
22	5979668.87	2181721.75	

NAD 1983 CHANNEL ANGLE POINTS			
ANGLE PT	X	Y	
23	5979972.37	2181637.25	
24	5979945.57	2181540.95	
25	5980138.27	2181487.25	
26	5980165.07	2181583.65	
27	5981470.57	2181246.85	
28	5981713.67	2181206.95	
29	5981880.67	2181121.75	
30	5981952.57	2181067.35	
31	5982244.97	2180738.05	
32	5982461.67	2180578.65	
33	5982755.97	2180482.65	
34	5983030.97	2180512.95	
35	5983258.17	2180608.45	
36	5983749.77	2180984.35	
37	5984431.57	2181185.15	
38	5984431.57	2181185.15	
39	5984950.27	2181431.85	
40	5985395.57	2181703.65	
41	5985896.97	2181965.95	
42	5986091.47	2182024.15	
43	5986326.57	2182006.05	
44	5987076.97	2181664.85	

Federal Navigation Channel	Beacon, General	Contours
Shoaling Area	Obstruction Point	-5
Placement Area	Navigation Buoy	-4
Anchorage Area	Navigation Buoy	-3
Wreck Area	Shoalest Sounding*	-2
Submerged Wreck		-1
Angle Point		

NOTES:
DRAWING NOT TO BE USED FOR NAVIGATION, ONLY CHANNEL CONDITION AT DATE OF SURVEY.
THE LOCATION OF ALL NAVIGATION AIDS ARE BASED ON INFORMATION PROVIDED BY THE U.S. COAST GUARD. BUOY LOCATIONS REPRESENT THE POSITION OF THE SINKER ONLY.

SURVEYED BY THE CORPS OF ENGINEERS.

SOUNDINGS FOR ARE TAKEN BY FATHOMETER AND ARE SHOWN TO THE NEAREST FOOT AND TENTH OF A FOOT.

SOUNDINGS ARE BASED ON THE DATUM OF MEAN LOWER LOW WATER AT THE LOCALITY.

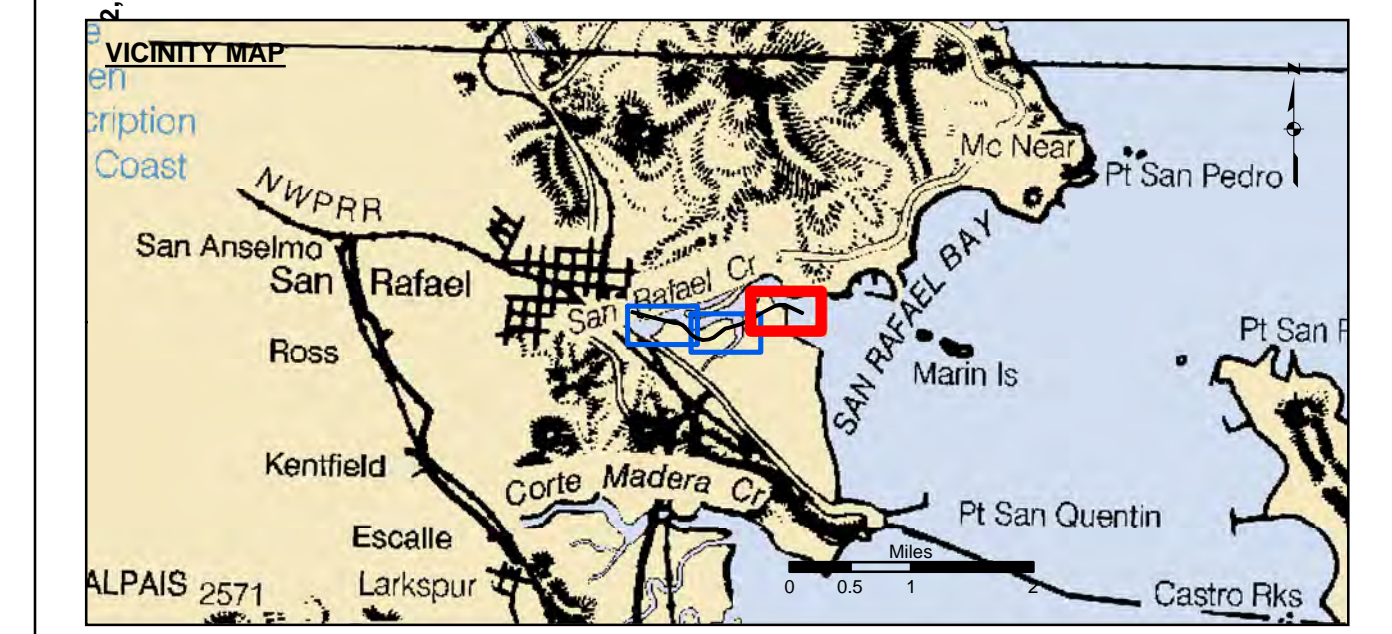
PLANE GRID AND COORDINATES ARE BASED ON LAMBERT PROJECTION, ZONE III NAD 83, CALIFORNIA, AS DESCRIBED IN SPECIAL PUBLICATION NO. 236, PUBLISHED BY NATIONAL OCEAN SURVEY.

THE PROJECT DEPTH IS 5 FEET.

HORIZONTAL CONTROL: DESIGNATION, SOURCE, XYZ COAST GUARD D-BEACON

VERTICAL CONTROL: BENCHMARK, MLLW ELEV., AGENCY B.M. TIDAL 17 (1951), USCGS DISK, 9.73 MLLW HARBOR ST. PUMPHOUSE, EAST FRANCISCO BLVD. B.M. L 551 (1956), USCGS DISK, 15.61 MLLW SAN RAFAEL SANITARY DIST. PUMPHOUSE, PT. SAN PEDRO RD.

TIDE GAGE LOCATION: SAN RAFAEL YACHT HARBOR & MARIN YACHT HARBOR
STA. 119+00 TO 150+00 ... Marin Yacht Harbor
STA. 150+00 TO 200+87 ... San Rafael Yacht Harbor
FLOOD => SLACK => EBB TIDE SURVEY 5.2 FL => 6.4 FL.



US Army Corps of Engineers
San Francisco District
450 Market Street
San Francisco, CA 94102

DISCLAIMER
Access Constraints: The United States Government furnishes this information as a service to the public. It is not intended to be used for navigation or other purposes. The user is responsible for the results of any application of the data for other than its intended purpose. The user is responsible for the results of any application of the data for other than its intended purpose. The user is responsible for the results of any application of the data for other than its intended purpose. The user is responsible for the results of any application of the data for other than its intended purpose.

Chart Date:	Oct 03, 2019
Designed by:	
Drawn by:	PDT
Checked by:	PDT
Approved:	Chief, Construction Branch
Submitted:	PDT
Plotted by:	
Surveyed By:	JOHN D. CUNNINGHAM
Prepared Under the Direction of:	LT COLONEL C.E. DISTRICT ENGINEER

CALIFORNIA
MARIN COUNTY
SAN RAFAEL CREEK
CONDITION SURVEY
24 SEPTEMBER 2019

Sheet
Reference
Number
3 of 3